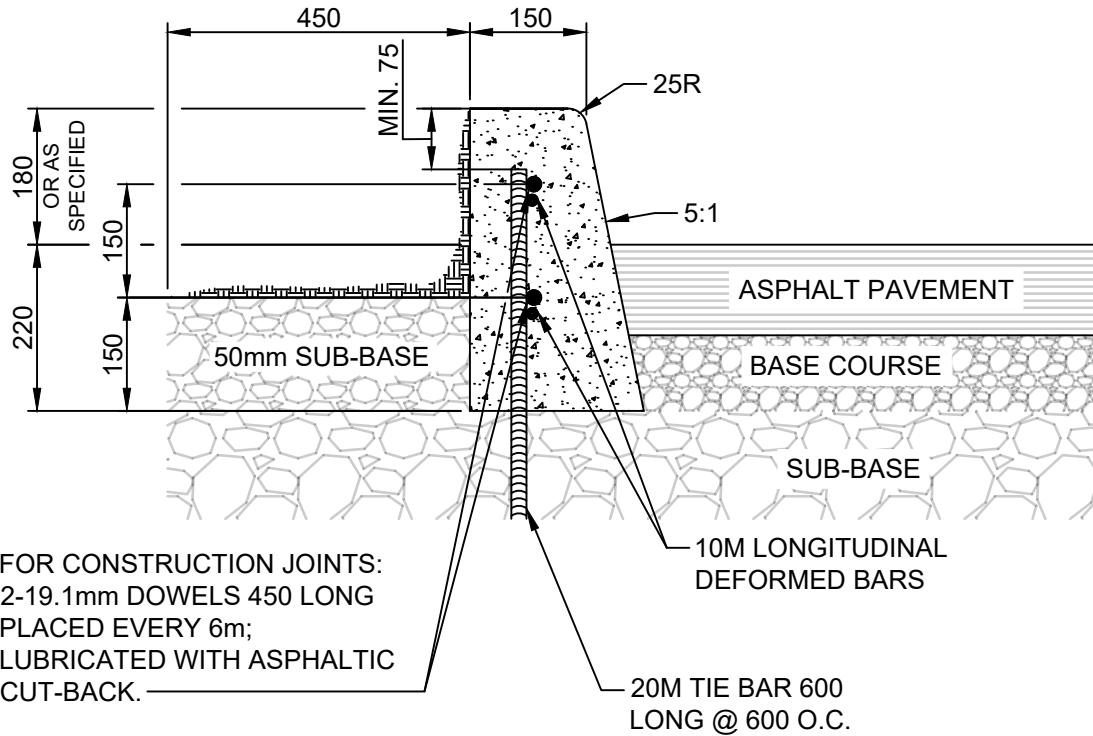


## **APPENDIX 'C'**

### **VARIOUS CURBS FOR ASPHALT PAVEMENTS**



NOTES:

1. TRANSVERSE SAW CUT EVERY 3m OR AT PAVEMENT JOINTS
2. TRANSVERSE SAW CUTS ARE TO BE A MAXIMUM DEPTH OF 25mm

DIMENSIONS IN MILLIMETRES



**THE CITY OF WINNIPEG**  
PUBLIC WORKS DEPARTMENT

Reference Spec. No.  
CW 3325

Revisions

No.	Date	Description	By

**BARRIER CURB FOR  
ASPHALT PAVEMENT**

Designed By:  
A.G.

Drawn By:  
R.B.

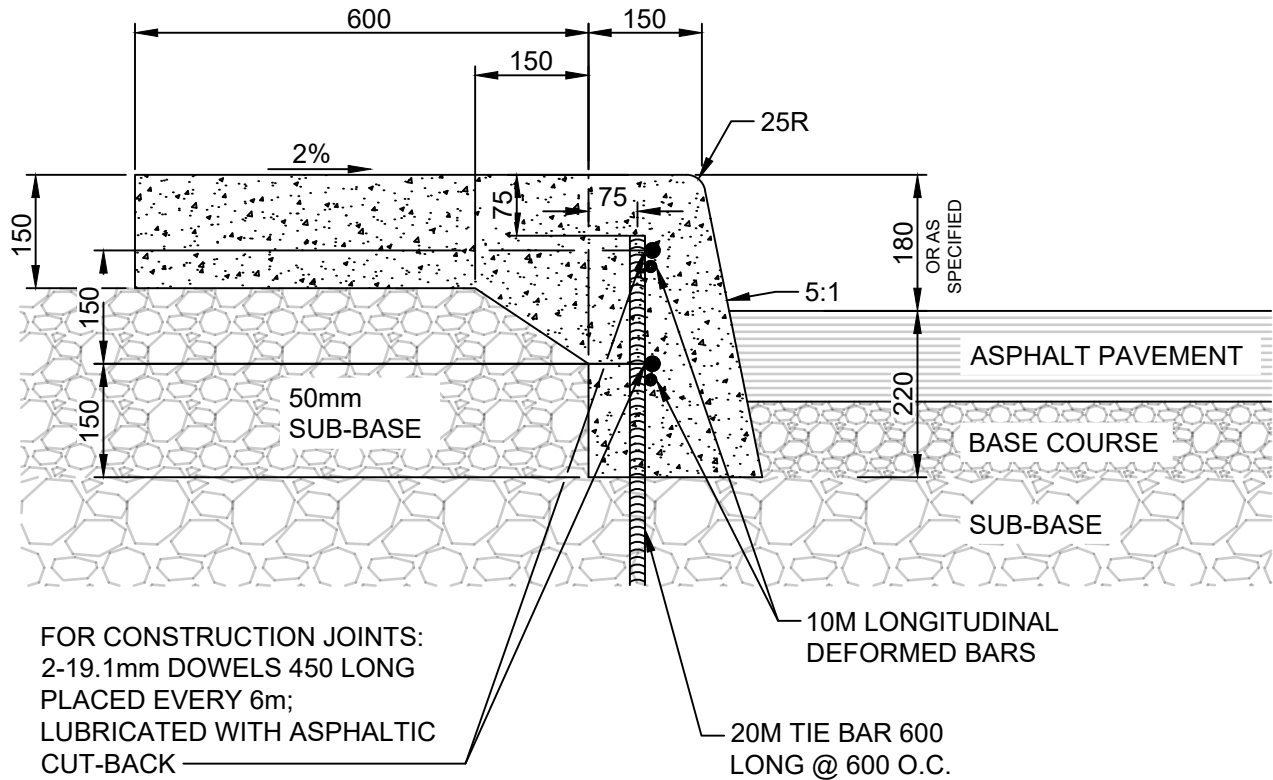
Scale :  
**N.T.S**

Checked By:  
B.K.

Date:  
2024-03-19

Drawing No.  
**SD-200A  
DRAFT**

Approved:  
PAVEMENT MANAGEMENT BRANCH

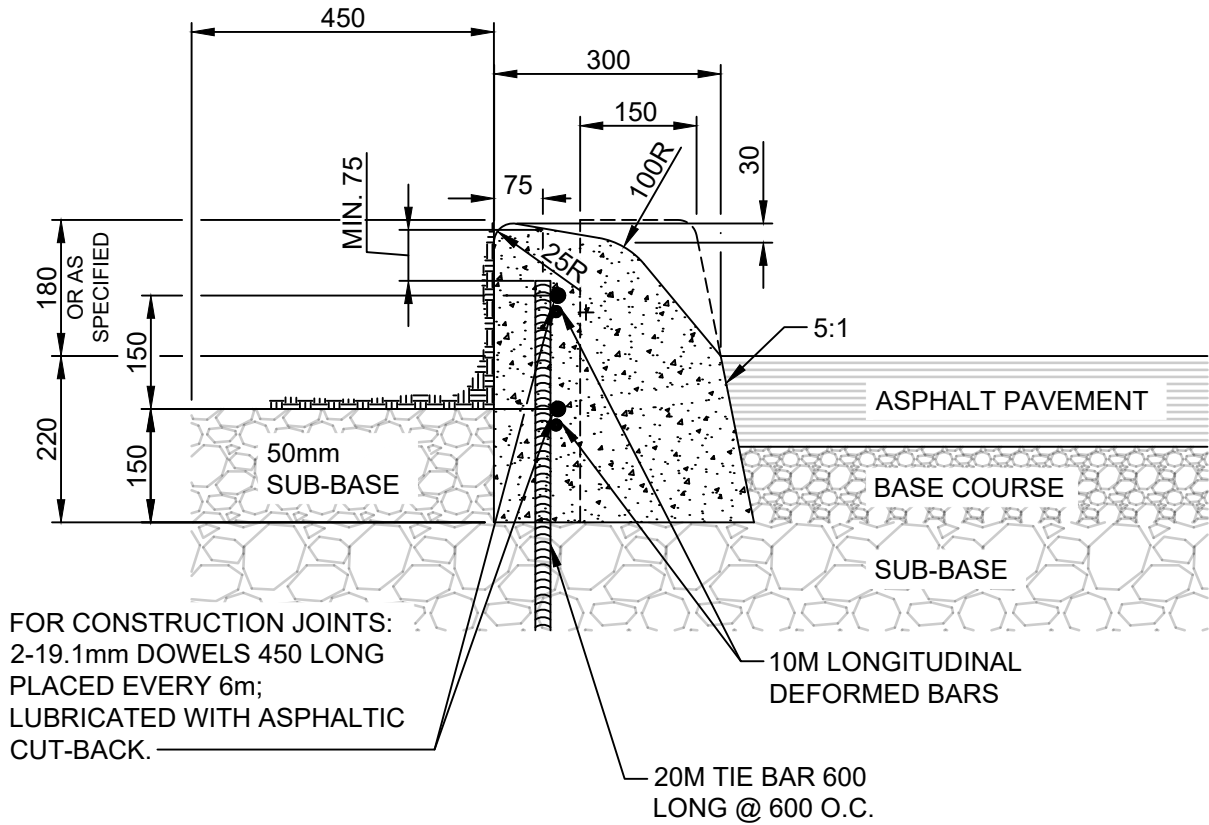


NOTES:

1. TRANSVERSE SAW CUT EVERY 3m OR AT PAVEMENT JOINTS
2. TRANSVERSE SAW CUTS ARE TO BE A MAXIMUM DEPTH OF 25mm

DIMENSIONS IN MILLIMETRES


	<b>THE CITY OF WINNIPEG</b> PUBLIC WORKS DEPARTMENT	Revisions																	
	Reference Spec. No. CW 3325	<table border="1" style="width: 100%; border-collapse: collapse;"> <tr><td style="width: 5%;"> </td><td style="width: 15%;"> </td><td style="width: 60%;"> </td><td style="width: 20%;"> </td></tr> <tr><td> </td><td> </td><td> </td><td> </td></tr> <tr><td> </td><td> </td><td> </td><td> </td></tr> <tr><td> </td><td> </td><td> </td><td> </td></tr> </table>																	
<b>BARRIER CURB WITH INTEGRAL          SPLASH STRIP FOR ASPHALT          PAVEMENT</b>		No.	Date	Description	By														
		Designed By: A.G.		Drawn By: R.B.	Scale : <b>N.T.S</b>														
		Checked By: B.K.		Date: 2024-03-19		Drawing No. <b>SD-200AA</b>													
		Approved: PAVEMENT MANAGEMENT BRANCH				<b>DRAFT</b>													

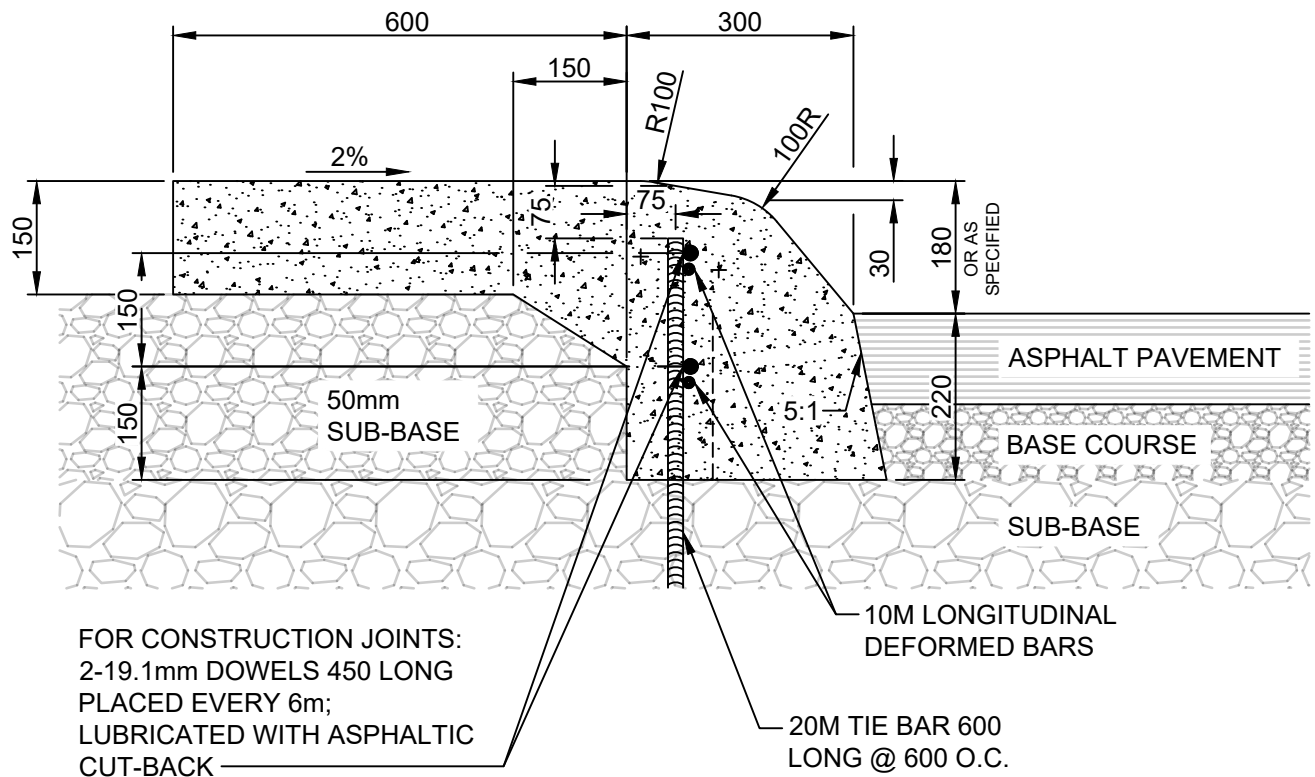


NOTES:

1. TRANSVERSE SAW CUT EVERY 3m OR AT PAVEMENT JOINTS
2. TRANSVERSE SAW CUTS ARE TO BE A MAXIMUM DEPTH OF 25mm

DIMENSIONS IN MILLIMETRES

	<b>THE CITY OF WINNIPEG</b> PUBLIC WORKS DEPARTMENT	Revisions			
	Reference Spec. No. CW 3325				
<b>MODIFIED BARRIER CURB          FOR ASPHALT PAVEMENT</b>		No.	Date	Description	By
		Designed By: A.G.	Drawn By: R.B.	Scale : <b>N.T.S</b>	
		Checked By: B.K.	Date: 2024-03-19	Drawing No. <b>SD-200B</b>	
		Approved: PAVEMENT MANAGEMENT BRANCH		<b>DRAFT</b>	



NOTES:

1. TRANSVERSE SAW CUT EVERY 3m OR AT PAVEMENT JOINTS
2. TRANSVERSE SAW CUTS ARE TO BE A MAXIMUM DEPTH OF 25mm

DIMENSIONS IN MILLIMETRES



**THE CITY OF WINNIPEG**  
PUBLIC WORKS DEPARTMENT

Reference Spec. No.  
CW 3325

Revisions

No.	Date	Description	By

**MODIFIED BARRIER CURB WITH  
INTEGRAL SPLASH STRIP FOR  
ASPHALT PAVEMENT**

Designed By:  
A.G.

Checked By:  
B.K.

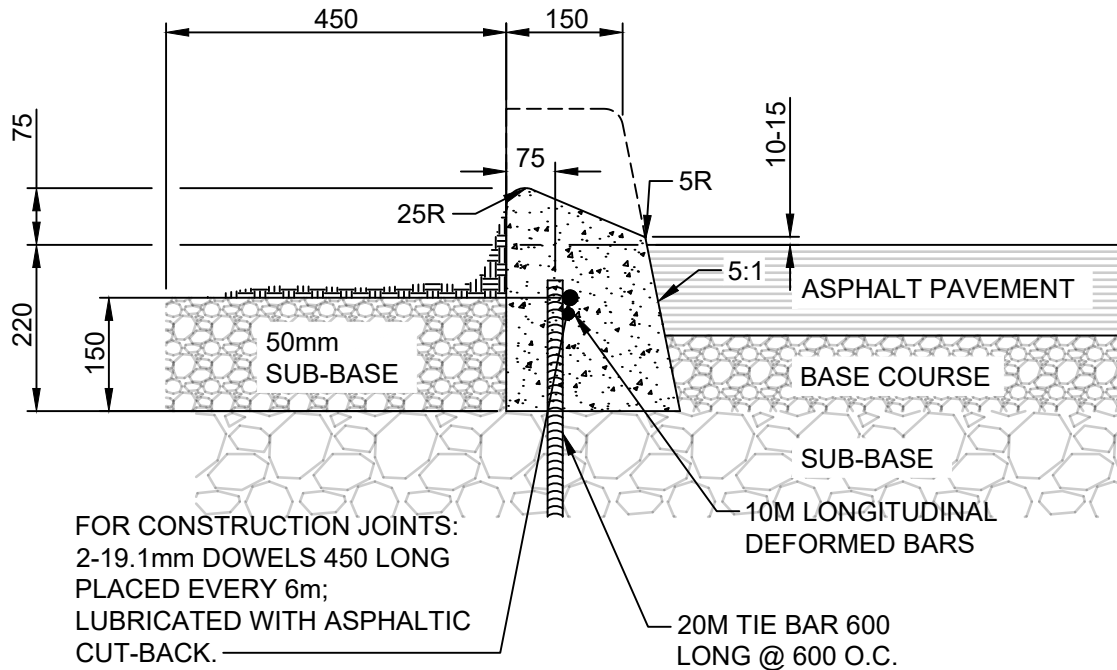
Approved:  
PAVEMENT MANAGEMENT BRANCH

Drawn By:  
R.B.

Date:  
2024-03-19

Scale :  
**N.T.S**

Drawing No.  
**SD-200BA  
DRAFT**



NOTES:

1. TRANSVERSE SAW CUT EVERY 3m OR AT PAVEMENT JOINTS
2. TRANSVERSE SAW CUTS ARE TO BE A MAXIMUM DEPTH OF 25mm

DIMENSIONS IN MILLIMETRES



**THE CITY OF WINNIPEG**  
PUBLIC WORKS DEPARTMENT

Reference Spec. No.  
CW 3325

Revisions

No.	Date	Description	By

**75 mm LIP CURB FOR  
ASPHALT PAVEMENT**

Designed By:  
A.G.

Drawn By:  
R.B.

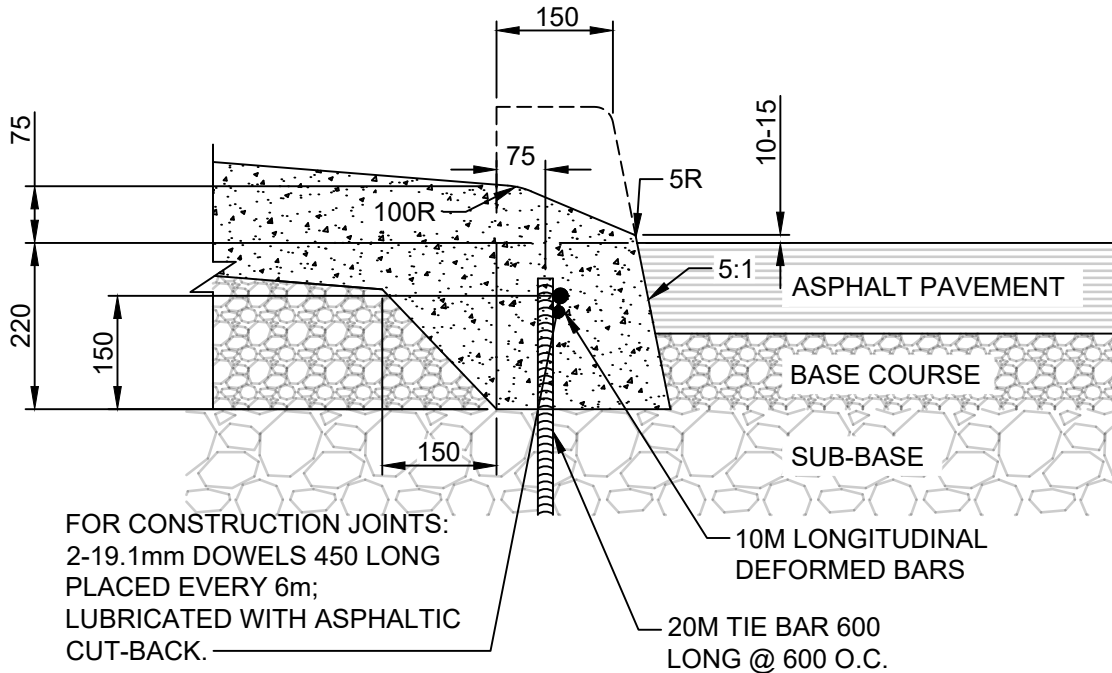
Scale :  
**N.T.S**

Checked By:  
B.K.

Date:  
2024-03-19

Drawing No.  
**SD-200C  
DRAFT**

Approved:  
PAVEMENT MANAGEMENT BRANCH



NOTES:

1. TRANSVERSE SAW CUT EVERY 3m OR AT PAVEMENT JOINTS
2. TRANSVERSE SAW CUTS ARE TO BE A MAXIMUM DEPTH OF 25mm

DIMENSIONS IN MILLIMETRES



**THE CITY OF WINNIPEG**  
PUBLIC WORKS DEPARTMENT

Reference Spec. No.  
CW 3325

Revisions

No.	Date	Description	By

**75 mm LIP CURB WITH  
INTEGRAL APPROACH  
FOR ASPHALT PAVEMENT**

Designed By:  
A.G.

Drawn By:  
R.B.

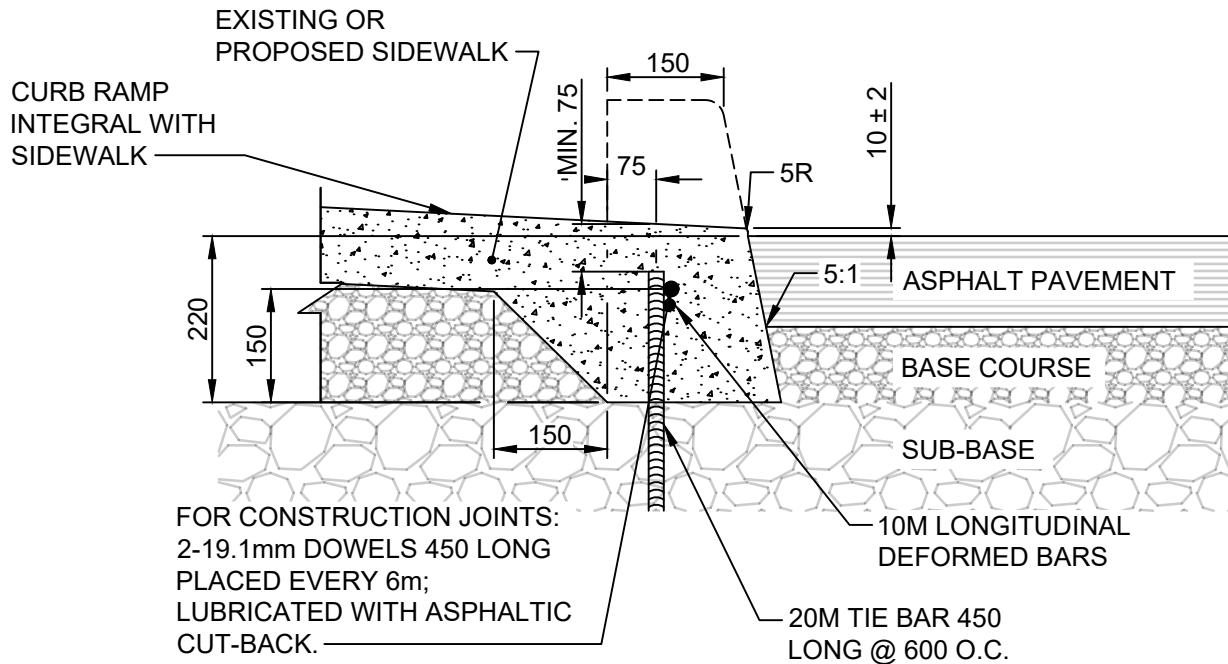
Scale :  
**N.T.S**

Checked By:  
B.K.

Date:  
2024-03-19

Drawing No.  
**SD-200CA  
DRAFT**

Approved:  
PAVEMENT MANAGEMENT BRANCH



NOTES:

1. TRANSVERSE SAW CUT EVERY 3m OR AT PAVEMENT JOINTS
2. TRANSVERSE SAW CUTS ARE TO BE A MAXIMUM DEPTH OF 25mm

DIMENSIONS IN MILLIMETRES



**THE CITY OF WINNIPEG**  
PUBLIC WORKS DEPARTMENT

Reference Spec. No.  
CW 3325

Revisions			
No.	Date	Description	By

**CURB RAMP FOR  
ASPHALT PAVEMENT**

Designed By: A.G.	Drawn By: R.B.	Scale : <b>N.T.S</b>
Checked By: B.K.	Date: 2024-03-19	
Approved: PAVEMENT MANAGEMENT BRANCH		Drawing No. <b>SD-200D</b> <b>DRAFT</b>